



AppsWatch Getting Started

Rev A

Getting started – first time users

This introduces you to the basic features and functions of AppsWatch, as well as walks you through running your first performance test.

Terminology

The following terms are used in AppsWatch:

AppsWatch Base:

The base organizes, drives, manages and monitors the performance test.

ScenarioStation:

ScenarioStation is a component of AppsWatch which repeatedly simulates the exact scenario that a user would.

Scenario Builder:

Scenario Builder is a tool used to create a real world scenario.

Dashboard:

Dashboard is a comprehensive, flexible view of all the metrics and services. It is an intuitive representation of the performance information. The information is organized in logical groups called Services.

Backend Monitoring

Monitors

Monitors contain Applications, Tasks, Systems, Logs, Nodes, SNMP and custom monitors.

Systems

Monitors computer systems, specifically CPU, memory, disk, file systems, processes, and services.

Tasks

Monitors availability and response time of your applications from the application layer perspective by executing user defined tasks.

Logs

Monitors logs from Systems, Databases, Applications and Syslog.

SNMP

Monitors any SNMP enabled device or server in your network. The purpose is to collect data on such things as device status, hardware environment (power supply, processor temperature, fan, etc), packets sent/received, uptimes, traffic errors, and more.

Nodes

Monitors availability/ response time of servers, routers, switches, and other vital network components as well as any TCP connect based applications. Opens application ports and performs pings and gives availability and response time results.

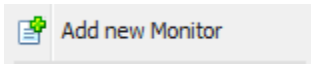
Groups

A group is a collection of monitors that share the following characteristics: alias, check frequency, connect time-out, and profile. There is no limit to the number of Groups that can be created. An admin can assign a user as the owner of the group and also specify the sharing privileges for the group.

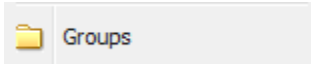
Services

Logical grouping of metrics (defined by the user). Services can also be comprised of other services. Alerts can be set on any level of service or metric.

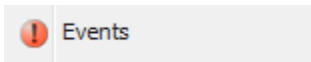
Tools



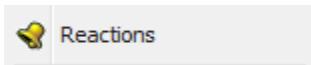
- Launches New Monitor form in a new tab.



- Launches Groups home page in a new tab.



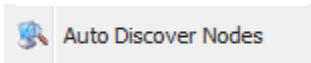
- Launches Events home page in a new tab.



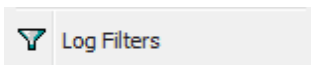
- Launches Reactions home page in a new tab.



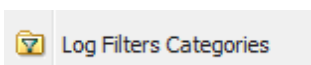
- Launches Scenario Stations home page in a new tab.



- Launches Auto Discover Nodes form in a new tab.



- Launches Log Filters home page in a new tab.



- Launches Log Filters Categories home page in a new tab.



- Launches Log Agents home page in a new tab.

Run the first performance test

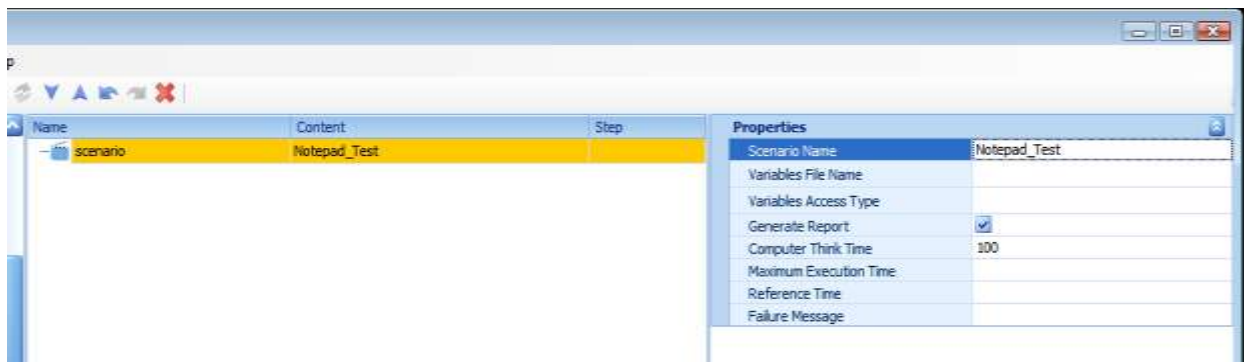
The best way to learn how to use AppsWatch is to practice running simple performance tests. This section will walk you through step-by-step on how to run a simple performance test. We will now run our first performance test, which basically involves three steps:

- 1) Create a Scenario using Scenario Builder.
- 2) Send scenario to the AppsWatch Base.
- 3) Add Application Monitor for the Scenario.

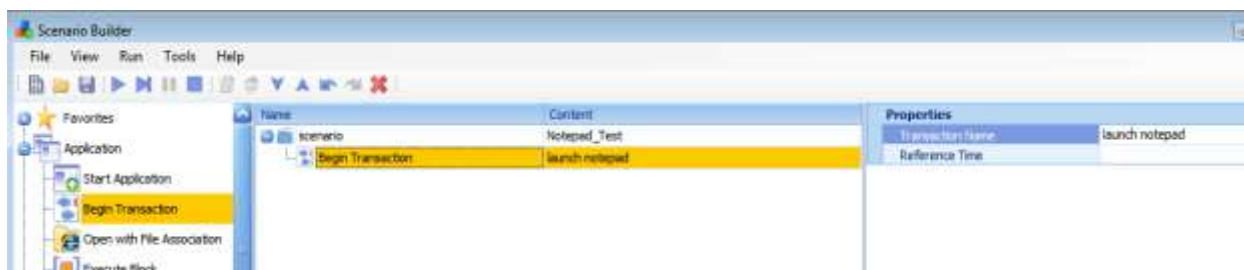
1) Create a Scenario using Scenario Builder

We'll launch the Notepad application, type a message, and then close the application.

1. First, click the New Scenario Icon in the toolbar to start a new scenario.
2. In the right Properties pane, assign a name for your scenario file: Notepad_Test

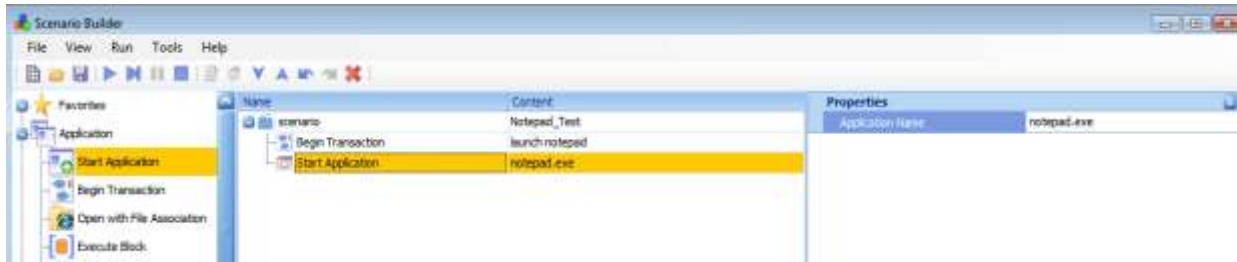


3. Double click on Begin Transaction (under Application) in the left pane to add it to your scenario. In the right Properties pane, assign the Transaction a name: launch notepad.



4. Double click on Start Application (under Application) in the left pane to add it to the scenario. In the right Properties pane, type the application to be launched: notepad.exe

Note: Don't forget to include the .exe extension

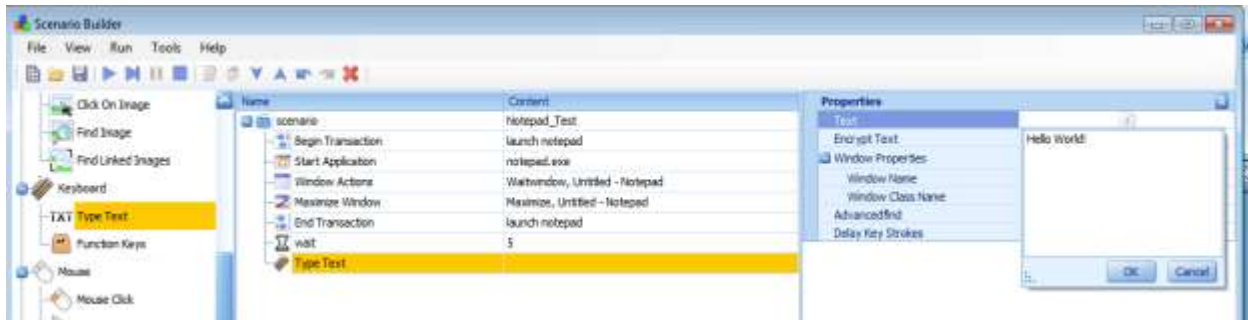


5. Next, double click on Window Action (under Window). In the right properties pane, configure the Window Action Name. Use the pull-down menu to select Wait Window. Also, enter the Window Name: Untitled – Notepad Note: You can select the window by clicking on the 'browse for a window' icon located in the windows property panel or find the name of a Window in its top title bar.



6. Next, double click on Window Action (under Window). In the right properties pane, configure the Window Action Name. Use the pull-down menu to select Maximize. Enter the Window Name: Untitled – Notepad. This means that as soon as the notepad windows opens, it will be maximized.
7. Double click on End Transaction (under Application) in the left pane to add it to your scenario. In the right Properties pane, use the pull-down menu in Transaction Name to select the transaction end: launch notepad. This means that the test will record a time measurement for all the steps that occurred between Begin Transaction and End Transaction. In this case, the test will give a measurement of the total time taken to: launch notepad and maximize the window.

- Next, double click on Type Text (under Keyboard). In the right properties pane, click on the Text field to open the text window. Enter your desired text to be typed (i.e Hello World) and click OK. If we had skipped the Waitwindow action in Step 5 or Notepad is running in injector or Citrix environment, we would need to enter the Window Name: Untitled – Notepad. This means the text will be entered in the Notepad window.



- Double click on Close Application (under Application). In the right Properties pane, type the application to be closed: notepad.exe
- The scenario is not quite done yet, since upon closing Notepad, the application will ask if you want to save your changes. Therefore, to successfully close the application, we'll need to accommodate for these steps.

Double click on Function Keys (under Keyboard). In the right Properties pane, use the pull-down menu to select Tab.

Next, double click on Function Keys (under Keyboard) again. This time in the right properties pane, use the pull-down menu to select Enter. Since we know the "Don't Save" option is the second selection in the Exit Notepad window, hitting the combination of Tab, then Enter will successfully close the application (without saving the file).

- Here's the final scenario:

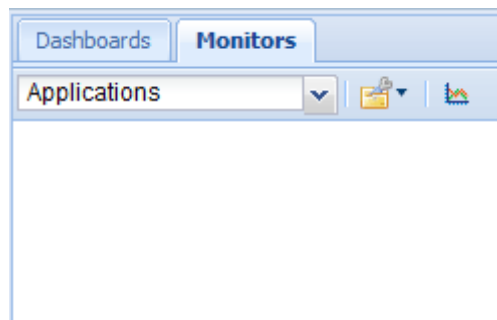
Scenario	
Name	Content
scenario	Notepad_test
Begin Transaction	launch notepad
Start Application	notepad.exe
Window Actions	Waitwindow, Untitled - Notepad
Maximize Window	Maximize, Untitled - Notepad
End Transaction	launch notepad
Type Text	hello world!
Close Application	notepad.exe
Function Keys	Press, Tab
Function Keys	Press, Enter

2) Send Scenario to the AppsWatch Base

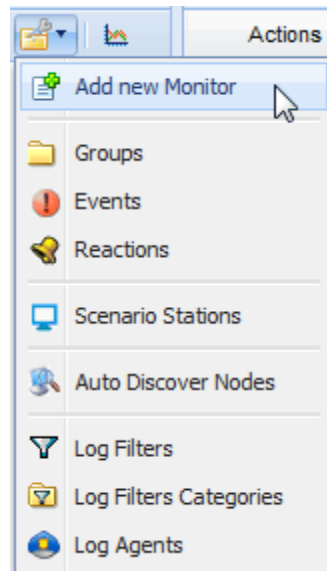
Mouseover “Run” tab and click on “Send”. You will see a dialog box saying, “Send successful”.

3) Add Application Monitor for the Scenario

1. At the top right hand corner click on “Monitors” tab.



2. Click on the tools menu . Click on “Add new Monitor”



3. A new tab opens with “New Monitor” name.

Dashboard Status Reports **New Monitor**

Required Parameters

Group: ?

Scenario Alias: ?

ScenarioStation: ?

Scenario: ?

Host/Server: ?

Events

Add Event

Del.	Type	Event	Profile	Reaction 1	Reaction 2
	Warning	Scenario Resp. Time > 2min		emailme	

Description

Description: ?

For “Group” choose anything from the drop down list depending on how you want to check your scenario.

- Give your scenario any alias name.
- Choose the ScenarioStation from the dropdown list.
- Choose the Scenario from the dropdown list.
- You can leave Host/Server blank.

Dashboard Status Reports **New Monitor** ✕

Required Parameters

Group: ? ▼


Scenario Alias: ?


ScenarioStation: ? ▼

Scenario: ? ▼

Host/Server: ?

Events

 Add Event

Del.	Type	Event	Profile	Reaction 1	Reaction 2
	Warning	Scenario Resp. Time > 2min		emailme	

Description

Description: ?

Click on Submit. Your scenario will run after every 5 minutes.